

AUGUST

2023

Email: [office@aspasa.co.za](mailto:office@aspasa.co.za)  
[www.aspasa.co.za](http://www.aspasa.co.za)

848 Lisbon Avenue  
 Little Falls, Roodepoort  
 Tel: 011 791 3327



# ASPASA

Your voice when it matters most

## this issue

From the Director's pen:  
 TMM Regulations P.1  
 GMG & SAIMM P.2  
 Gqeberha Visit P.2  
 Technical P.2  
 IQSA Golf Day P.3  
 ASPASA MANCOM & IQSA Board P.3  
 MHSC Board Meeting P.3  
 CEO ZERO Harm Special Hour of Learning P.4  
 Small Surface Mines Statistics P.4



### ASPASA INFO:

Director - Letisha van den Berg  
 Mobile No - 082 210 1628  
 Email - [letisha@aspasa.co.za](mailto:letisha@aspasa.co.za)

Liaising with Government and Industry bodies, to be the voice for small scale mining. Support small scale mines with relevant information and legal updates. Supporting the supply chain of small-scale mining by meetings, introductions to members and logo/brand visibility.

Accounts - Paula Korb  
 Email - [accounts@aspasa.co.za](mailto:accounts@aspasa.co.za)

Membership: Audits: Training: Quotes:  
 Invoicing: Statements: Certificates: Audit reports from Auditors MHSA & OHSA Law books: flags: notebooks

Admin - Annéké Earle  
 Email - [office@aspasa.co.za](mailto:office@aspasa.co.za)

All administrative: Meetings: Events Calendar: Queries: Website: ASPASA Newsletter: Reports: Policies: Scheduling Director's appointments

H&S Auditor - Marius van Deventer  
 Mobile No - 083 635 2873  
 Email - [marius@aspasa.co.za](mailto:marius@aspasa.co.za)

Health & Safety Audits - Guidance to ensure compliance. Legal Liability Training

Environmental Auditor - Anthony Bowen  
 Mobile No - 083 652 9907  
 Email - [anthony@aspasa.co.za](mailto:anthony@aspasa.co.za)

Environmental Audits - Guidance to ensure compliance.

Explosives & Blasting Auditor - Corrie Rautenbach  
 Mobile No - 083 456 3018  
 Email - [corrie@exms.net.za](mailto:corrie@exms.net.za)

Explosives Audits - Guidance to ensure compliance.

Technical & Quality Auditor - Barry Pearce  
 Mobile No - 082 883 2225  
 Email - [Barry@learningmattersetc.co.za](mailto:Barry@learningmattersetc.co.za)

Technical & Quality - Guidance to ensure compliance.

## FROM THE ASPASA DIRECTOR'S PEN

### TMM Regulations

ASPASA attended various sessions regarding the TMM Regulations and after members also engaged with their various DMRE Inspectors to understand the process to follow.

#### 1. Do you have significant risk?

All large mine vehicles and pedestrians on a mine is a significant risk if no control measures are put in place. When you conduct your risk assessment include every vehicle and person on your mine in the risk assessment. Each individual vehicle and persons have different roles, different paths and different risks.

#### 2. How do you reduce the significant risk?

The practical reduction of vehicle risk is:

- Maintenance of vehicles
- Pre-start checklists
- Manage movement of the vehicles on site through traffic management
- Planned task observations to ensure adherence.

The practical reduction of pedestrian risk is:

- Medical surveillance of employees
  - Induction of employees
  - Training on the various Code of practices
  - Manage movement of the pedestrians on site through traffic management
  - Planned task observations to ensure adherence.
3. How does Traffic management assist in reduction of significant risk
- Determine the following:
    - Size of vehicle fleet including sales trucks entering mine e.g. 30 ton ADT
    - How many vehicles move on the mine?
    - Where do these vehicles move?
    - Identify the unwanted collision opportunities
    - How many people walk around and interact with vehicles?
    - Why are people walking on the mine and interacting with vehicles?

- b. Next step once you have identified the hot spots:
  - a. Use the MOSH Surface Mine Traffic Management process to guide you
  - b. The main items to look at is change traffic flow to reduce unwanted collision events between vehicles and people
  - c. Separating people and different size of vehicles
  - d. Implement engineering controls – barriers/berms/hard parks/widening roads where practical/additional roads where practical just to mention a few
  - e. After the controls have been implemented re-evaluate the risk assessment. If there is then still significant risk then investigate the collision avoidance systems available from level 7 to level 9.
  - f. There is an option to request an exemption, but the main aim of this law is to prevent collision, ensure you prevent collision first before attempting to ask for exemption or partial exemption.

Throughout the process engage your DMRE Inspectorate and take them on this journey with you.



## GMG and SAIMM

### Practical Implementation of Collision Avoidance: Lessons Learned from South Africa

ASPASA was invited to be part of a panel discussion with the Global Mining Guidelines Group around the collision avoidance systems lessons learnt.

There were individuals from Canada and Australia attending to learn from the processes followed and the specifications developed.

ASPASA utilised the lessons learnt through the PDS trials done at Afrimat, Afrisam and engagements with the different collision avoidance suppliers. We need more lessons learnt sessions in other areas too, to learn from other mining industries.

### Gqeberha Visit

We visited Lafarge Moregrove Quarry and Supacrush Quarry for an introductory meeting. I am not familiar with the locations of ALL THE ASPASA Members' sites, and their respective managers, and therefore I took some time to visit the member operations.

I also met with the Principal Inspector of the DMRE in the region, it was a meeting of much learning and debating.

One must always tap into experience to improve processes and old ways of doing. I did pop into Afrimat Denver Quarry as well and it was great to see old faces but also a new young safety professional.

### Technical

Please ensure you look at the proposed new SANS 1083 *Aggregates for construction*. There will be four part as follows: Part 1 Aggregates for concrete, Part 2 Aggregates for mortar and plaster (to replace SANS 1090), Part 3 Aggregates for asphalt, Part 4 Aggregate for surfacing's.

Your input into these proposed standards is very important. Please submit comments to Bryan Perrie. If you do not have the draft SANS document, please let us know and we can forward it to you.

*Building a future together*



BRYAN PERRIE CEO

T +27 11 315 0300 C 083 309 4260

bryan.perrie@cemcon-sa.org.za | www.cemcon-sa.org.za

PO Box 168, Halfway House, 1685, South Africa

## **IQSA Golf Day**

ASPASA supported the IQSA Gold day by sponsoring a 4 ball for young professionals. Unfortunately, we could only accommodate Gauteng based professionals or those who could cover their own travel and accommodation.

### **Faith Mongwe and Thobekile Nomcebo**



## **ASPASA MANCOM and IQSA Board**

We had our first combined session discussing the way forward with the two industry bodies. The plan is clear and the passion to develop the young professionals is evident in the strategy.

We will need input from the industry members and therefore decided on the following processes to start the process:

1. Combined working committee – the working committee look at UK training, small surface mining industry member standards
2. Study the UK and Australia combination of IQSA and ASPASA platforms
3. Develop a small surface mining career path and access to MQA accredited suppliers available
4. Companies to provide service provider names for the career path document
5. Market our industry at Universities, Schools, Colleges

Working together we can fast track the process and have a good structure in place to assist any person wanting to start a career in small surface mining.

## **MHSC Board Meeting**

The working committees of the MHSC where industry members participate feeds information back to the MHSC Board. This includes new Code of Practices, review of legislation and other guidelines. The working committees are MRAC, MOHAC, MITAC, CTAC and MOSAC

### MRAC Mining Regulations Advisory Committee

The Guideline for the compilation of a Mandatory Code of Practice for minimum standards on Ground Vibration, Noise, Airblast and Flyrock near structures to be protected are being developed. ASPASA is well represented on this committee with Corrie Rautenbach representing small surface mining and giving input from the members. The document is not approved for Gazette yet.

### MOHAC Mining Occupational Health Advisory Committee

This committee works on all the Occupational Health and Hygiene topics such as noise, dust, thermal stress, vibration, NIHL, Silicosis etc. We need a Health Representative on this committee to represent small surface mines.

### MITHAC Mining industry TB and HIV advisory committee

Have you aligned your HIV/TB/STI policy and programme in relation to the new National Strategic Plan for HIV, TB, and STIs 2023 – 2028? ASPASA will share the strategic plan for you to look at and a reminder that Penny Mead can assist you with this process at a minimal cost.

### WIMAC Women In Mining Advisory Committee

ASPASA has arranged for MHSC to come and present the latest Guideline on Gender Based Violence to the members. Please attend the session to ensure your procedures and policies aligns with this guideline. The Security and Safety of our Women in the mines is a crucial element. We do work in isolated vulnerable areas, and we need extra measures to always keep the women safe.

### MOSAC Mining Occupational Safety Advisory Committee

The Guideline for compilation of a mandatory code of practice for Trackless Mobile Machinery was approved by the Board. The final document will be circulated.



## CEO Zero Harm Special Hour of Learning

ASPASA presented to the forum the ISHE Initiating Safety Health and Education programme. We shared the importance of :

- The ASPASA Member input into the document,
- The weighting in the key focus areas with the most weight at legal documents and outside operationally where injuries can happen
- DMRE and other mining industry statistical trends
- Some leading practices

We also shared positive outcomes through visual images of how the audit assisted in improving the culture, working environments and the reduction in injuries.

We are looking forward to the review of this document for 2024 and your input once again to ensure it keeps on adding positive value in the zero-harm journey.

### Small Surface Mines Statistics

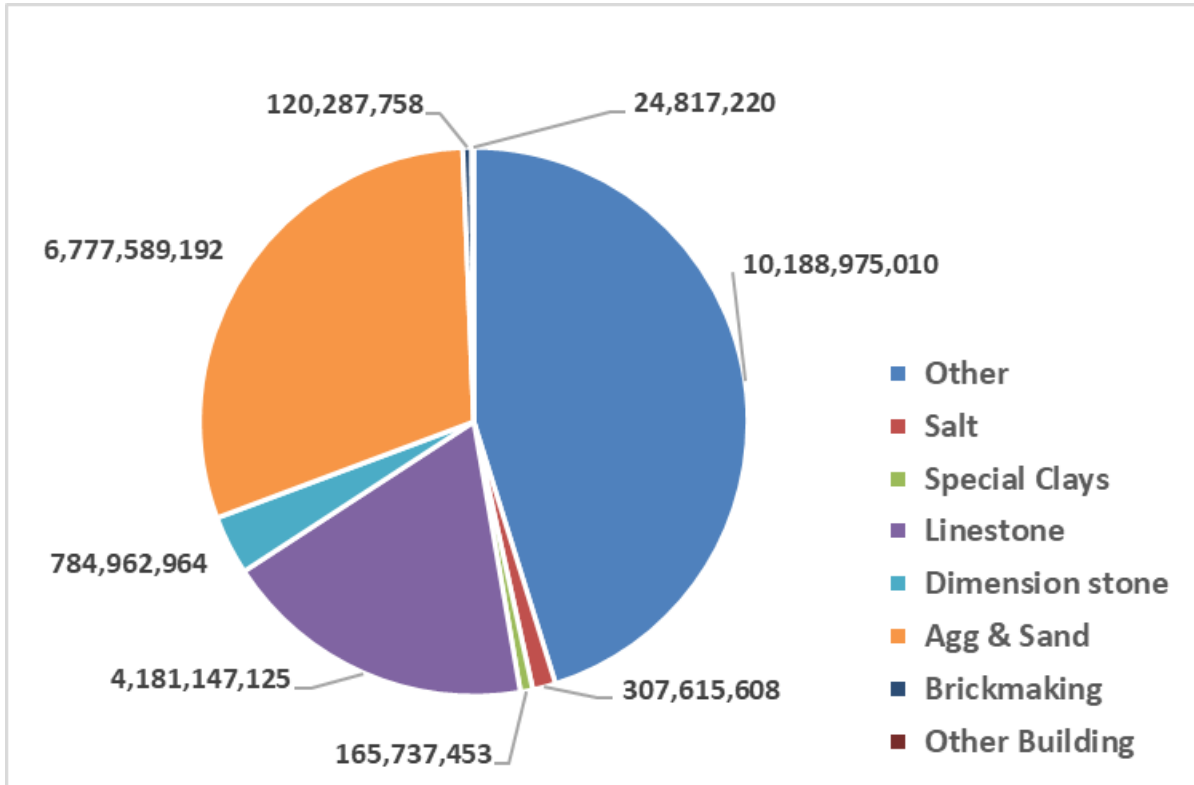
Henk Langenhoven Chief Economist of MINCOSA pulled some statistics for our industry and if you never knew the positive impact you make on South Africa's economy, here are the facts. All stats are from Statistics South Africa, DMRE, SARS and the Reserve Bank and all information is publicly available.

Stats utilised was as table below:

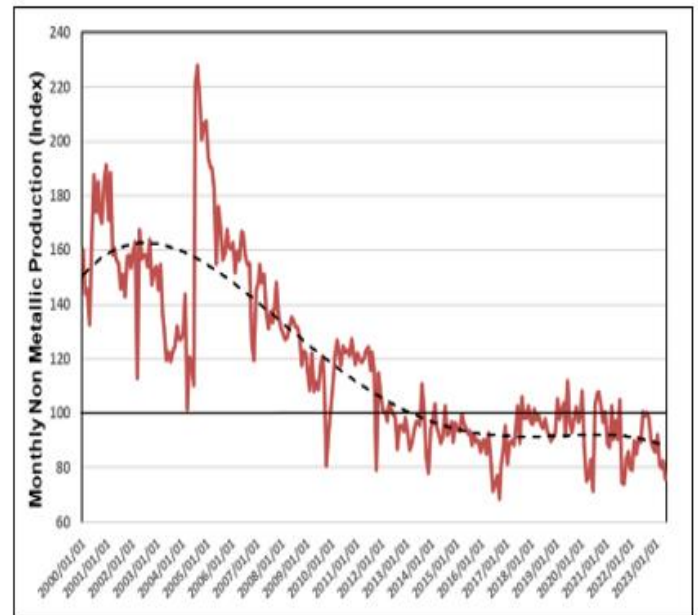
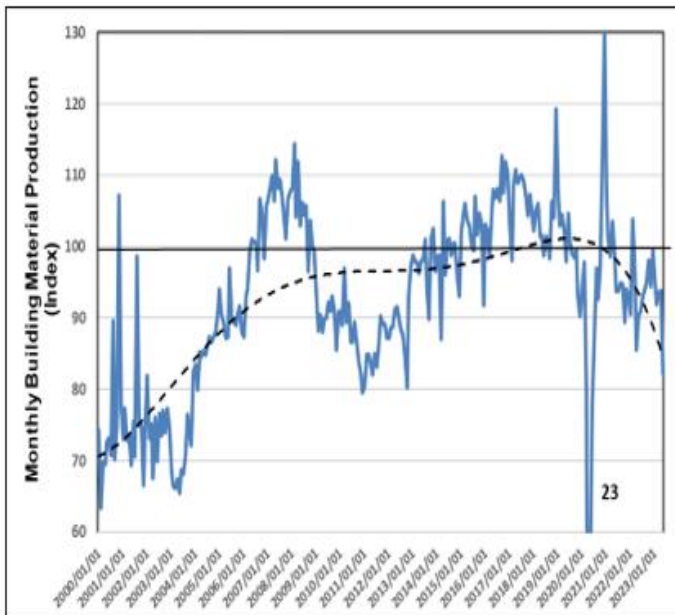
<b>Division 08</b>	<b>Other mining and quarrying</b>		
<b>081</b>	<b>Quarrying of stone, sand and clay</b>		
	<b>0810</b>	Quarrying of stone, sand and clay	
		<b>08101</b>	Quarrying of dimension stone
		<b>08102</b>	Quarrying of limestone and limeworks
		<b>08109</b>	Other quarrying of stone, sand and clay
<b>089</b>	<b>Mining and quarrying n.e.c.</b>		
	<b>0891</b>	Mining of chemical and fertilizer minerals	
		<b>08911</b>	Mining of phosphates
		<b>08919</b>	Other mining of chemical and fertilizer minerals
	<b>0892</b>	<b>08920</b>	Extraction of peat
	<b>0893</b>	<b>08930</b>	Extraction of salt
	<b>0899</b>	Other mining and quarrying n.e.c.	
		<b>08991</b>	Mining of diamonds
		<b>08992</b>	Mining of precious and semi-precious stones, except diamonds
		<b>08999</b>	Other mining and quarrying n.e.c.

<input type="checkbox"/>	<input type="checkbox"/>	M05: Industrial minerals	<input type="checkbox"/>
<input type="checkbox"/>	<input checked="" type="checkbox"/>	M0501: Non metallic other	<input type="checkbox"/>
<input type="checkbox"/>	<input checked="" type="checkbox"/>	M0502: Salt (Unit: t)	<input type="checkbox"/>
<input type="checkbox"/>	<input checked="" type="checkbox"/>	M0503: Special clays (Unit: t)	<input type="checkbox"/>
<input type="checkbox"/>	<input checked="" type="checkbox"/>	M0504: Limestone and lime (Unit: t)	<input type="checkbox"/>
<input type="checkbox"/>	<input checked="" type="checkbox"/>	M0505: Dimension stone (Unit: t)	<input type="checkbox"/>
<input type="checkbox"/>	<input checked="" type="checkbox"/>	M0506: Aggregate and sand (Unit: t)	<input type="checkbox"/>
<input type="checkbox"/>	<input checked="" type="checkbox"/>	M0507: Brickmaking materials (Unit: t)	<input type="checkbox"/>
<input type="checkbox"/>	<input checked="" type="checkbox"/>	M0508: Building materials other (Unit: t)	<input type="checkbox"/>

Sales 2022 R22,551 Billion



Production figures for Building materials (blue graph) Non-Metallic Production (red graph)



ASPASA MANCOM will engage closer with Henk to extract more relevant information for small surface mines. If there are any statistics, you are interested in please let me know and we will ask for it. ASPASA will share the full presentation with the members as well.

The economic situation is not in an ideal place for our industry. The Construction Sector remains our main income stream and tenders are coming out slowly and only in certain areas. But every sale makes a positive impact on the economy.