

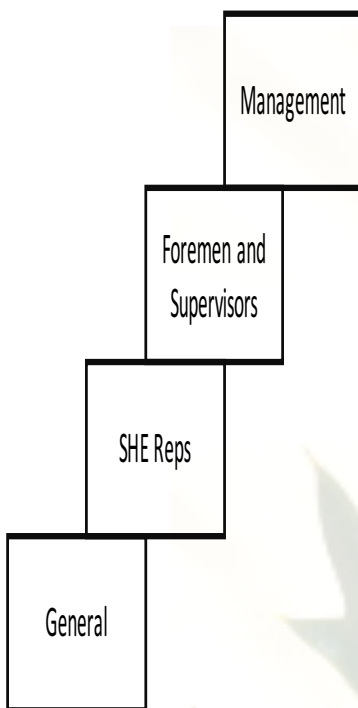
Cluett Consulting



PO Box 334
Jukskei Park
Randburg, 2153
South Africa

Tel & Fax: +27 (0)11 462 3903
Cellular: +27 (0)79 325 6892 (Colleen)
+27 (0)83 408 7724 (Alan)
+27 (0)83 276 3175 (Iain)
Email: info@cluett.co.za

TRAINING HIERARCHY PROPOSAL



Management:

- Air quality sampling requirements
- Noise monitoring requirements
- Water quality monitoring requirements
- Waste management requirements
- Applicable Licences and authorisations

Foremen and Supervisors:

- Compliance obligations and how they apply to you
- Managing your EMS
- Air, water, noise, waste management: Managing Sampling Programmes & Understanding reports

SHE Representatives

- Compliance obligations and SHE Rep. responsibilities
- Types of Authorisations and their obligations
- Simple Management through the EMS
- Presenting Environmental Tool-box Talks

General workers

- Water, Air, Soil
- Waste management & Pollution
- Legal obligations of all persons in SA
- Licences / Approvals and Conditions

Other areas for consideration:

- Health and Safety
- ABET
- Leadership and growth

Three Options for Training

In-person training

- 2-3 hours
- Minimum of 10 attendees
- Held in major regions
- Printed handouts, flash drive notes and an assessment



Webinar training

- Flexible time allocation
- Will require an internet connection
- Notes emailed prior to commencement of the training

Training modules

- Modules created
- Notes for trainer
- Assessment with answers or description of PTOs

